

ANGIOJET®

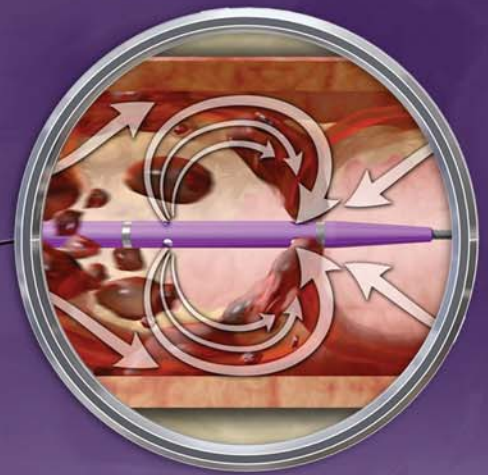
DVX®



**Tru-Seal® Hub**

Easier Guide Wire Management

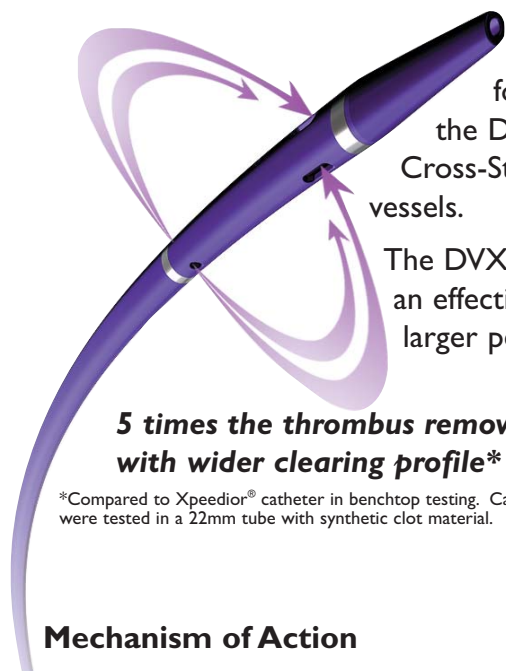
**increased POWER**  
**for TOUGH**  
**PERIPHERAL**  
**THROMBUS**



**Redesigned Tip**

Enhances Cross-Stream® Technology

# AngioJet® DVX®: The most powerful AngioJet catheter!



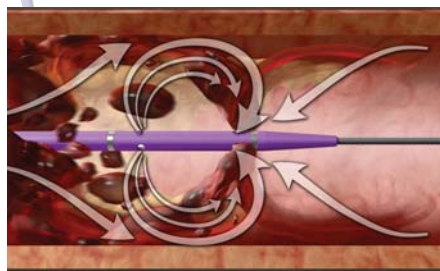
The AngioJet DVX thrombectomy catheter is specially engineered for powerful thrombus removal in peripheral vessels. The design of the DVX catheter leverages the power of the AngioJet system's exclusive Cross-Stream® action by increasing the clearing profile in larger peripheral vessels.

The DVX catheter was developed in response to the pressing clinical need for an effective method to remove older, chronic clot — especially problematic in larger peripheral arteries.

**5 times the thrombus removal with wider clearing profile\***

\*Compared to Xpedior® catheter in benchtop testing. Catheters were tested in a 22mm tube with synthetic clot material.

## Mechanism of Action



*Proprietary Cross-Stream® technology provides fast and effective 360° thrombus removal*

## Order Information and Specifications

ANGIOJET® ULTRA		ANGIOJET® SERIES 3000			
DVX Thrombectomy Set 106552-001		DVXCatheter 105420-001	Pump Set 102184-001		
<i>Minimum Vessel Diameter</i>	<i>Working Length</i>	<i>Shaft Diameter</i>	<i>Wire Compatibility</i>	<i>Guide Compatibility</i>	<i>Sheath Compatibility</i>
3mm	90cm	6F	0.035"	8F ≥ 0.086"	6F

Operation of the Catheter may cause hemolysis. Hemolysis indicators in the blood should be monitored if total operation time exceeds 8 minutes or if operation in a flowing blood field exceeds 4 minutes. Excessive hemolysis may require blood transfusion. In investigational clinical studies, hemolysis induced by AngioJet System operation was not associated with any significant systemic response.

The AngioJet System includes several catheter models that are marketed for thrombectomy of coronary arteries and bypass grafts, AV access conduits, peripheral veins, and peripheral arteries. See product Information for Use for specific and complete prescribing information.

AngioJet, Rheolytic, Cross-Stream, Xpedior, Tru-Seal and DVX are trademarks of MEDRAD, INC.  
© 2008

## Power Pulse Delivery

With Power Pulse Delivery technique, the outflow lumen of the AngioJet Catheter is closed. This allows the fluid to be pulsed through the catheter, penetrating and disrupting the thrombus.

By infusing lytic directly into the thrombus, the dose and duration of lytic exposure may be reduced.



After lytic has been allowed to work on the thrombotic lesion, the catheter is primed and flushed with saline and reintroduced into the clot.

After opening the outflow lumen for normal thrombectomy, the powerful Cross-Stream® action of the catheter can remove the softened thrombus.

## Order Information

Use with AngioJet Ultra: 104834-002

Use with AngioJet Series 3000: 104834-001

**MEDRAD**  
Interventional | POSSIS®

MEDRAD Interventional - U.S.A  
One Medrad Drive  
Indianola, PA 15051-0780 U.S.A.

MEDRAD Europe B.V.  
Postbus 205  
6190 AE Beek  
The Netherlands

phone: 1.800.MEDRAD1  
1.800-633-7231

tel: +31 43-3585600

www.medrad.com