

The Total Solution

Medrad Neurovascular Array



Image courtesy of Stanford University Hospital



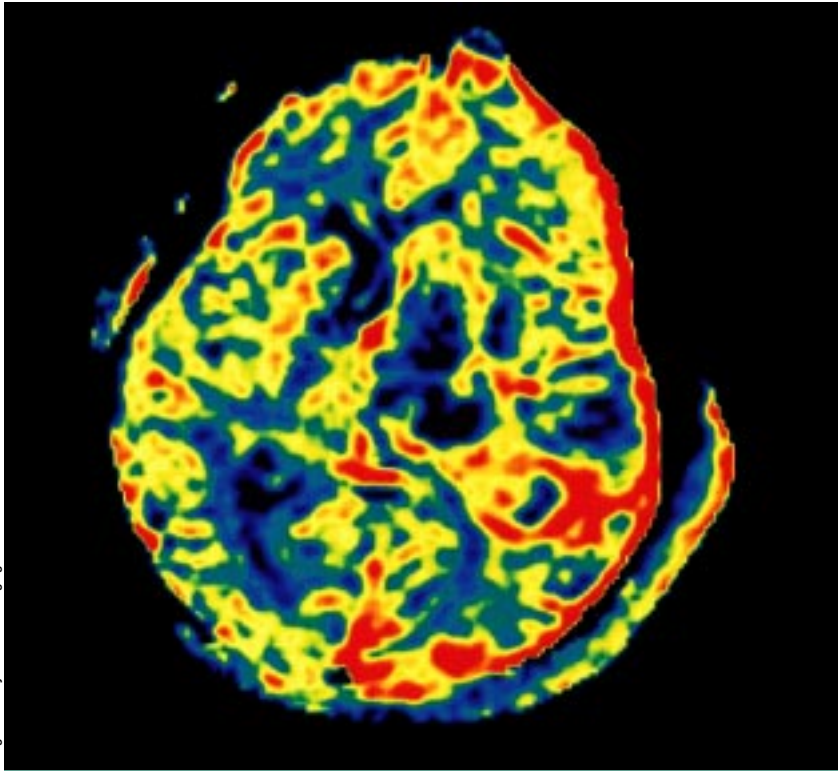
medRAD®

The **Leading**
Image



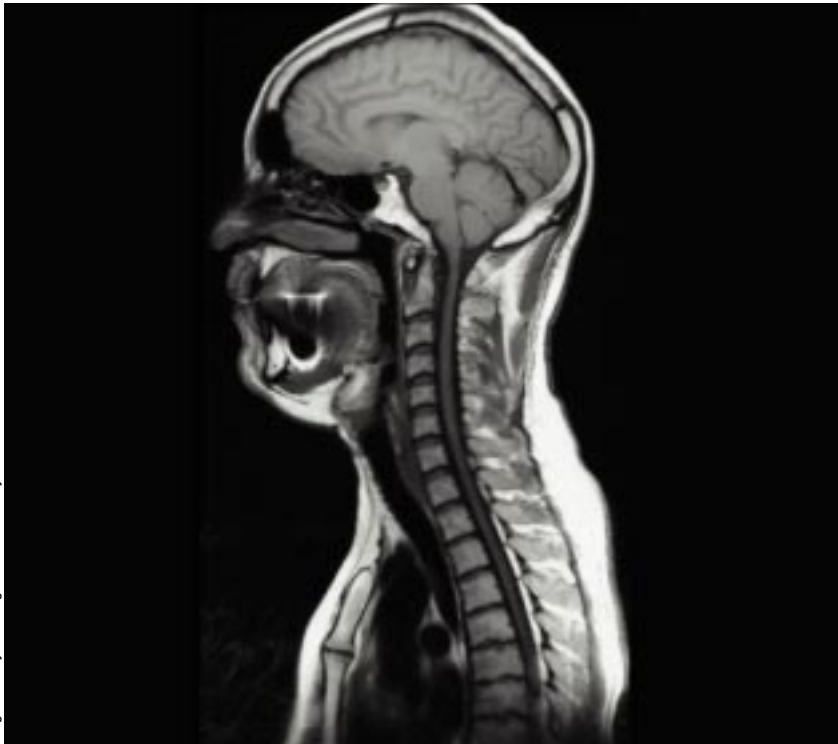
1 2 3 4 MEDRAD

Neurovascular Array



Axial Contrast Enhanced Perfusion Weighted EPI; TE 80, TR 1900, 192x128, 10mm, 30 FOV

Image courtesy of Edison Imaging Associates

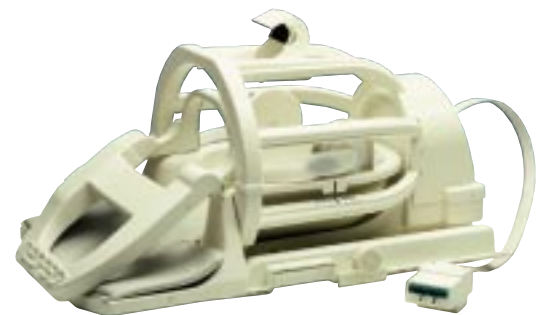


Sagittal T1 Weighted Spin Echo; TE 16, TR 417, 5mm, 512x512, 46 FOV

Image courtesy of Michigan State University

Innovative Answers

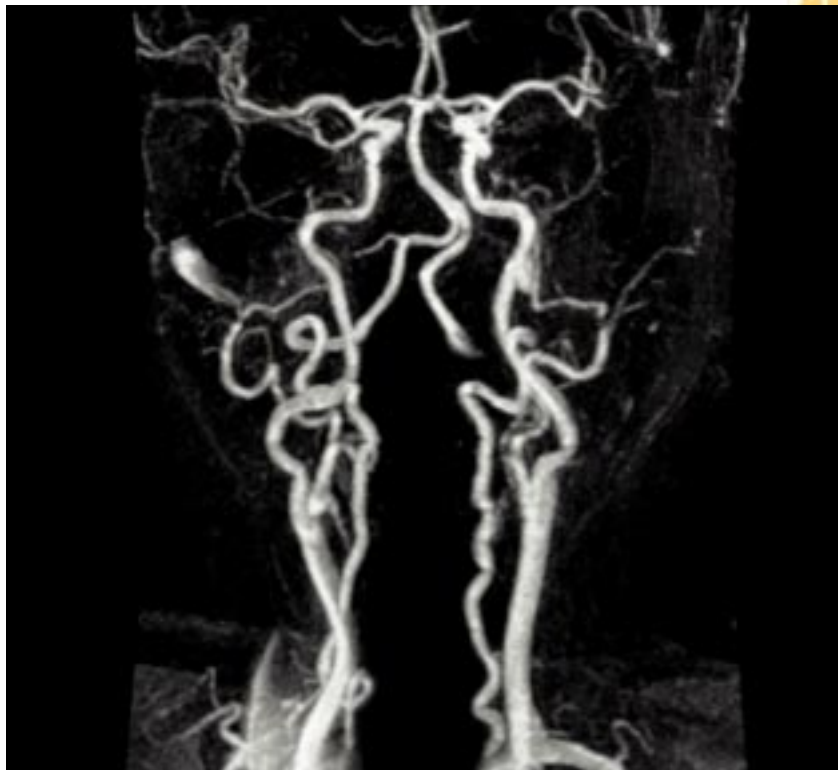
- Five element array provides SNR and uniformity equivalent to head coil.
- Large 46 cm FOV coverage eliminates the need to change coils.
- Single Shot- EPI compatible for diffusion and perfusion sequences.
- Open Design - reduces claustrophobic reactions.
- Mirror attached to coil reduces patient anxiety.
- Light weight ergonomic design provides excellent patient comfort.
- Flexible anterior paddle accommodates a full range of patient sizes.
- Quadrature phased array technology permits multiple applications:
 - MRA
 - Soft Tissue Neck
 - Brain
 - C-Spine



The **Leading**
Image™

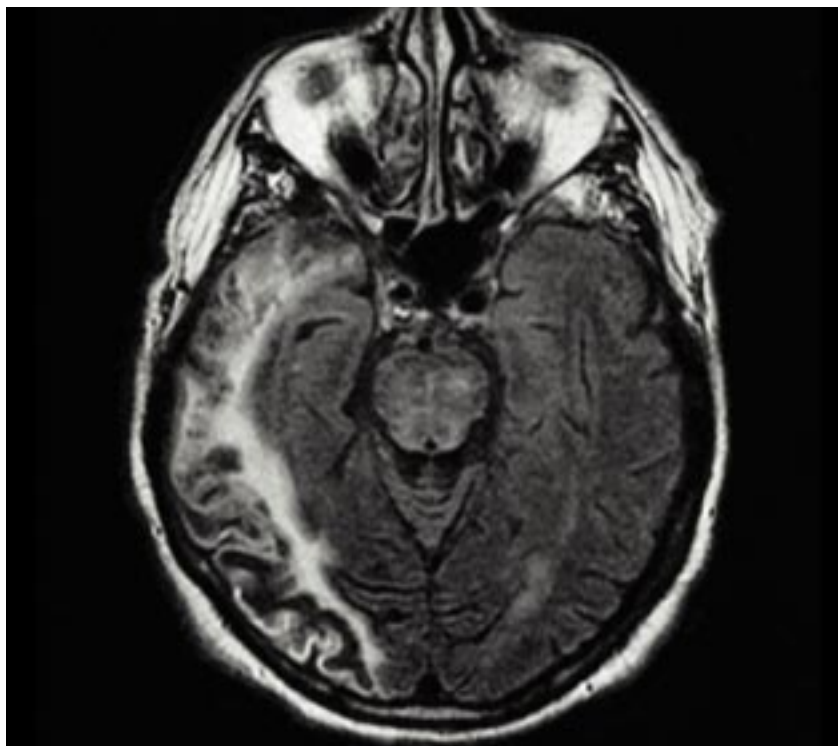
Clinical Impressions

- “ We view the Neurovascular Array as a huge win.”*
- “ It is fantastic! The images are beautiful and clearly superior to what we were using.”*
- “ The brain image quality is first rate.”*
- “ This is an excellent coil, and provides roughly 20% increase in SNR over the headcoil that we normally use.”*
- “ One of the best features of the coil is the fact that no operator intervention is necessary to move from the neck to the head.”*
- “ This product is a ‘must-have’ for our department.”*
- “ The field of view allowed provides excellent coverage for brain, cervical spine, aortic arch, carotid and soft tissue neck exams without moving the patient.”*
- “ We have waited quite a while for a coil with this level of performance. This has made a difference in our practice.”*



Coronal Contrast Enhanced MRA (utilizing elliptical centric K-space filling)
TE 1.6, TR 6.6, Flip 45, 256x224, 1.4mm/0.7sp, 22x15 FOV

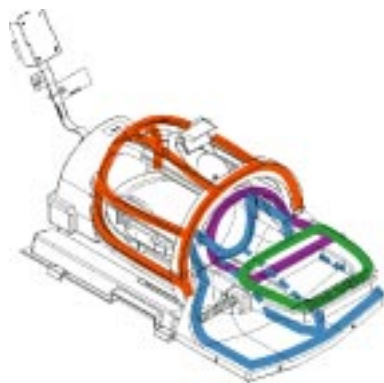
Image courtesy of Mayo Clinic



Axial Flair; TE 162, TR 10002, TI 2200, 256x192, 5mm, 24 FOV

Image courtesy of Massachusetts General Hospital

Coil Configurations/ Applications



NVPA (Neurovascular)

- Quadrature/Phased Array Mode
- Configuration File will turn on entire array
- May be used for all type of Brain and Neck Imaging, excluding Echo Planar Imaging (EPI)
- FOV 46cm (maximum)

Recommended uses:

- Brain and/or Cervical Spine Localizers
- Imaging of the Cervical Spine
- Imaging of the Carotid Arteries
- Imaging of the Aortic Arch



FASTBRN (Fast Brain)

- Quadrature Mode
- Configuration File will turn on only the Head coil section of the array
- May be used for Echo Planar Imaging (EPI)
- May be used for vascular studies of the brain to reduce Recon time
- FOV 24cm

Recommended uses:

- EPI sequences
- Imaging of the Brain
- Imaging of Circle of Willis



HRBRN (High Resolution Brain Array)

- Quadrature/Phased Array Mode
- Configuration File will turn on only the Head coil section of the array
- Use this configuration for high resolution imaging of the brain
- Compatible with all imaging sequences, except EPI
- FOV 24cm (maximum)

Recommended uses:

- High Resolution Brain imaging
- High Resolution Circle of Willis imaging

NV Array Specifications

Compatibility

GE Signa® 1.5T

Catalog Number

M64NVA

Applications

Complete MR imaging of the brain, soft tissue neck, cervical and upper thoracic spinal regions.

Coil Design

Quadrature phased array design

Coil Dimensions

28.4"L x 15.1"W x 13.2"H
(72,1 cm L x 38,4 cm W x 33,5 cm H)

Coil Weight

21.9 lbs. (9,9 kg)

Sensitive Volume

Sagittal: 46 cm
Axial: 25 cm
Coronal: 46 cm

Warranty

Product is warranted to be free from defects in materials and workmanship for a period of twenty-four months from date of shipment. Please see the published warranty for details.

Service

Contact Medrad at:
1-800-MEDRAD-S
(1-800-633-7237)

For a Demonstration, Call

1-800-MR COILS
1-800-672-6457



Medrad is dedicated to continually improving the quality of all our products and services such that our customers' satisfaction, loyalty, and respect are unsurpassed. It is our policy to clearly understand and agree upon the valid requirements of the work we perform for our customers, both internal and external, and to pursue 100% conformance to those requirements...on time, every time.

Medrad reserves the right to modify the specifications and features described herein, or discontinue manufacture of the product described at any time without prior notice or obligation. Coils are compatible with all existing hardware and software at the time of release. Please contact your authorized Medrad representative for the most current information.

Medrad, Inc. is EN-ISO 9001/EN 46001 Certified
Medrad Europe B.V. is EN-ISO 9002/EN 46002 Certified

Medrad, Quality for Life, Q and design are federally registered trademarks and The Leading Image is a trademark of Medrad, Inc. U.S.A.

GE Signa is a federally registered trade mark and/or service mark of GE Medical Systems, Inc.

MEDRAD®

The only source for Medrad Engineering,
Medrad Quality, Medrad Service and Medrad Support.

Medrad, Inc. Corporate Office

One Medrad Drive
Indianola, PA 15051-0780 USA
www.medrad.com

87305-00-BA-20